

*Tenda*

# Beli

beautiful life

SS9

Smart Wi-Fi Dimmer Switch



# SS9

## Smart Wi-Fi Dimmer Switch

SS9 is a Smart Wi-Fi Dimmer Switch, it can adjust 1-100% smart switch dimming via Beli APP as you like. You can schedule the Switch to automatically switch on & off when you're away. The Wi-Fi Smart Dimmer Switch works directly with Amazon Alexa and Google Assistant to manage your devices. The SS9 works on secured 2.4GHz wireless networks without the need for a separate hub. The standard size conforms to the electrical specifications and is suitable for most switch bottom boxes.

# Selling Points



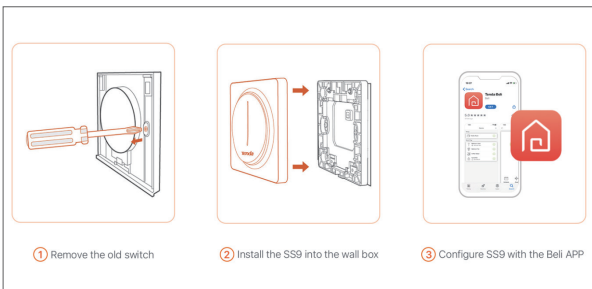
## Adjust the Brightness Like You Want

Enable to adjust 1-100% smart switch dimming via Beli APP to make your light as you like. The memory function will automatically locate the latest light setting. It supports most of dimmable bulbs.



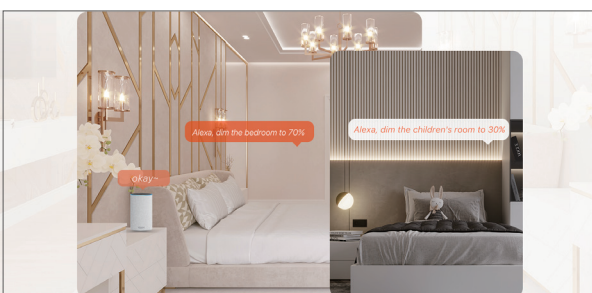
## Smart Control from Everywhere

Smart control your light status through the Tenda Beli App or your voice, which provides you with intimate intelligent lamp control, free hands and feet of labor, giving you more relax and comfort.



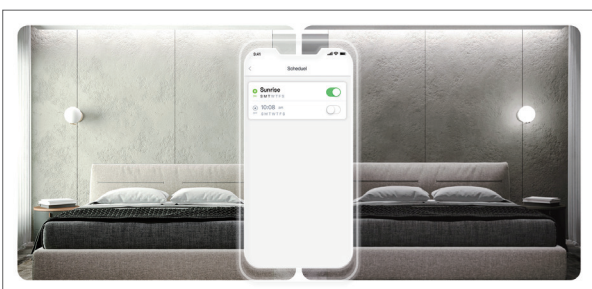
## Easy to Install and Get Done in Three Steps

Follow the step-by-step instructions to complete the installation, and experience the convenience of smart life.



## Voice Control

Compatible with Alexa and Google Assistant, your voice can control devices easily.



## Customize Your Own Lifestyle

Create schedules of on/off, so that your devices can work automatically. Enable the scene you want with 1-click in the Beli App.

# Specification

## NETWORK

Protocol	IEEE 802.11b/g/n
Wireless Type	2.4GHz
System Requirements	Android 5.0 or higher, iOS 10 or higher
AI Control	Amazon Alexa and Google Assistant

## GENERAL

Certification	RoHS, CE
Package Contents	Smart Wi-Fi Dimmer Switch*1 Wall Plates*1 Quick Installation Guide*1 Screw*2 Wire Label*1
Environment	Operating Temperature: -10 °C ~45 °C
Dimensions	Without Panel 86x86x42.6mm
Material	PC
Buttons	Multiplex Power Button / Touch Bar
Packaging Dimensions	95x95x49 mm

## WORKING STATUS

Input voltage	200-240V~, 50Hz
Power to Access	Neutral Wire Required
Output Current	/
Load Power	Inductive load (LED/CFL) : 220W Max Resistive load (Incandescent): 300W Max

## **SHENZHEN TENDA TECHNOLOGY CO.,LTD.**

Tenda Technology Bldg.Int' | E-City,  
#1001 Zhong Shan Yuan Rd.,Nanshan District,Shenzhen China.

E-mail:support@tenda.com.cn

Tel:+86-755-2765 7098

Fax:+86-755-2765 7178

PC:518055



Like us on Facebook



Follow us on Twitter