

Tenda

Beli
beautiful life

SS9

Smart Wi-Fi Dimmer Switch



SS9

Smart Wi-Fi Dimmer Switch

SS9 is a Smart Wi-Fi Dimmer Switch, it can adjust 1-100% smart switch dimming via Beli APP as you like. You can schedule the Switch to automatically switch on & off when you're away. The Smart Wi-Fi Dimmer Switch works directly with Amazon Alexa and Google Assistant to manage your devices. The SS9 works on secured 2.4GHz wireless networks without the need for a separate hub. The standard size conforms to the electrical specifications and is suitable for most switch bottom boxes.

Selling Points



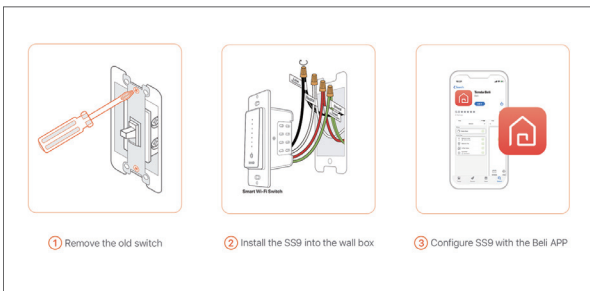
Adjust the Brightness Like You Want

Enable to adjust 1-100% smart switch dimming via Beli APP to make your light as you like. The memory function will automatically locate the latest light setting. It supports most of dimmable bulbs.



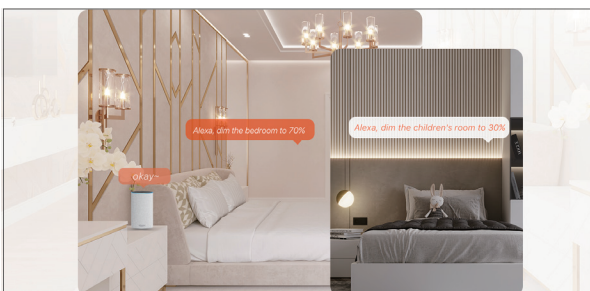
Smart Control from Everywhere

Smart control your light status through the Tenda Beli App or your voice, which provides you with intimate intelligent lamp control, free hands and feet of labor, giving you more relax and comfort.



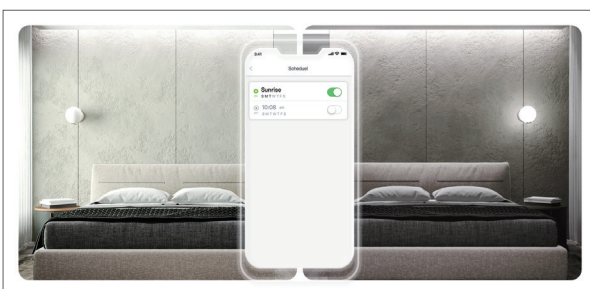
Easy to Install and Get Done in Three Steps

Follow the step-by-step instructions to complete the installation, and experience the convenience of smart life.



Voice Control

Compatible with Alexa and Google Assistant, your voice can control devices easily.



Customize Your Own Lifestyle

Create schedules of on/off, so that your devices can work automatically. Enable the scene you want with 1-click in the Beli App.

Specification

NETWORK	
Protocol	IEEE 802.11b/g/n
Wireless Type	2.4GHz
System Requirements	Android 5.0 or Higher, iOS 10 or Higher
AI Control	Amazon Alexa and Google Assistant
GENERAL	
Certification	FCC, ETL
Package Contents	Smart Wi-Fi Dimmer Switch*1 Wall Plates*1 Quick Installation Guide*1 Wire Nuts*5 Screw*2 Wire Label*1
Environment	Operating Temperature:-10℃~40℃
Dimensions	With Panel 114x70x45mm Without Panel 105x45x45mm
Material	PC
Buttons	Multiplex Power Button / Touch Bar
Packaging Dimensions	81 x 65 x 129mm
WORKING STATUS	
Input voltage	100-120V~, 60Hz
Power to Access	Neutral Wire Required
Output Current	/
Load Power	Inductive load (LED/CFL) : 250W Max Resistive load (Incandescent): 430W Max

SHENZHEN TENDA TECHNOLOGY CO.,LTD.

Tenda Technology Bldg.Int'l E-City,
#1001 Zhong Shan Yuan Rd.,Nanshan District,Shenzhen China.

E-mail:support@tenda.com.cn

Tel:+86-755-2765 7098

Fax:+86-755-2765 7178

PC:518055

