

Tenda



TEG1016G

16-Port Gigabit Ethernet Switch

Link
More



TEG1016G

16-Port Gigabit Ethernet Switch

Products Description

TEG1016G is a 16-port gigabit Ethernet switch independently designed by Tenda. The switch supports wire-speed forwarding of all ports to ensure smooth transmission of large files and video streaming. It features a compact metal body, and supports desktop, wall and rack mounting. As a flexible and simple-to-use device, it can be connected to such network devices as computers and network cameras. It is your ideal choice for video surveillance and wired networking in such scenarios as SMBs, communities, factories, and schools.

Key Feature

- Compliant with IEEE802.3, IEEE802.3u, IEEE802.3ab, IEEE802.3x
- 16 10/100/1000 Base-T Ethernet ports
- 8K MAC address and MAC address automatic learning
- IEEE 802.3x full-duplex flow control and half-duplex backpressure flow control
- Plug and play
- 32 Gbps non-blocking wire-speed forwarding backplane bandwidth
- 4 Mb large buffer design
- With 19-inch body design, and support desktop, wall and rack mounting

Main Features



With Rack Design

Standard 19-inch Device Designed for Rack.



Mute and Energy Saving

Fanless Design Greatly Reduces Noise.



Plug and play

Plug and play for easy networking.



Wire Speed Forwarding

The switch features wire speed forwarding of all ports.

Specifications

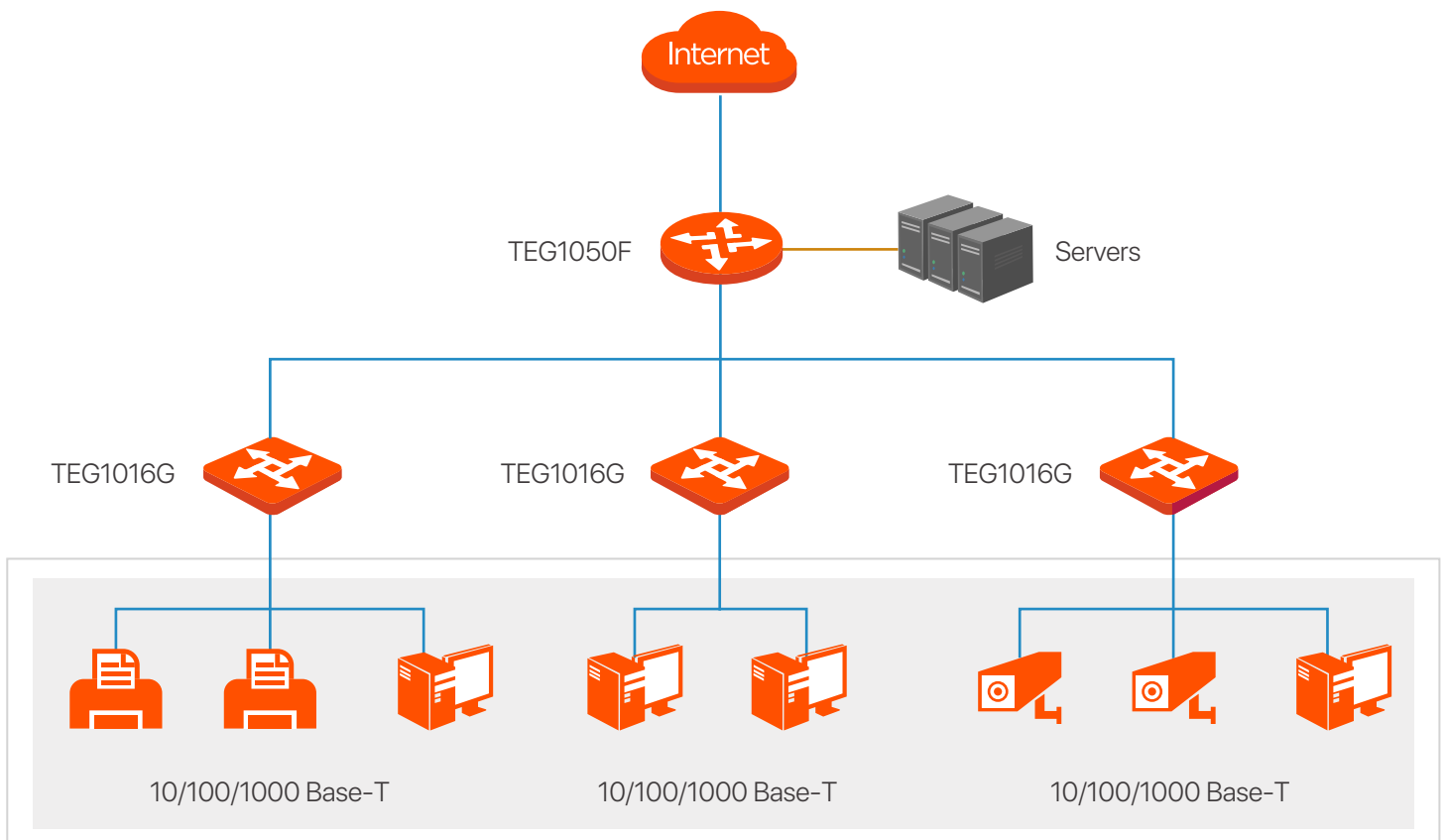
Model	TEG1016G
Hardware Specifications	
Network Standards	IEEE802.3, IEEE802.3u, IEEE802.3ab, IEEE802.3x
MTBF	50,000 hours
LED Indicators	One Link/Act LED indicator for each port One Power LED indicator for each device
Ports	16* 10/100/1000 Base-T Ethernet ports
Lightning Protection	≥6KV
Switching Mode	Store-and-forward
Switching Capacity	32Gbps
Forwarding Rate	23.8Mpps
MAC Address Table	8K
Buffer	4 Mb
Input Voltage	AC: 100–240V 50/60Hz
Dimensions (L × W × H)	440 mm x 120 mm x 44 mm
Power Consumption	<12W
Environment	Operating temperature: 0°C – 45°C Storage temperature: –40°C – 70°C Operating humidity: (10% – 90%)RH, non-condensing Storage humidity: (5% – 90%)RH, non-condensing

Software Specifications

Jumbo Frame	15K
Certificates	FCC、CE、RoHS

Relevant Info

- Cable
- Optical fiber



SHENZHEN TENDA TECHNOLOGY CO.,LTD.

Tenda Technology Bldg.Int'l E-City,
#1001 Zhong Shan Yuan Rd.,Nanshan District,Shenzhen China.

E-mail:support@tenda.com.cn

Tel:+86-755-2765 7098

Fax:+86-755-2765 7178

PC:518055

