

## 300Mbps Utral-Fast Wireless USB Adapter

U1



### 360° omni-directional rotating antenna for perfect 2.4GHz

3.5dBi high gain detachable antenna with 360° omni-directional rotating provides a remarkable signal strength and coverage.

### 2T2R high transceiver technology

Combining with internal and external antennas, 2T2R double-channel transmission penetrating ability and stability to solved dead point (wall corner and long distance signal), and make a stable and perfect transmission.



### 4-layer PCB with high-quality materials

It takes 20 RF engineers, 5 hardware engineers and 10 software engineers more than half a year with thousands of tests to put 4 layer PCB within ultra small space. Electrical stability and radio frequency interference is 120% higher than the normal 2-layer PCB.

### Perfect match with high speed wireless router

300Mbps transmission speed for SOHO wireless router, it can reduce data return loss rate and increase 50% Wall Penetrating ability, LAN data transmission, and can enjoy more smooth gaming and surfing.



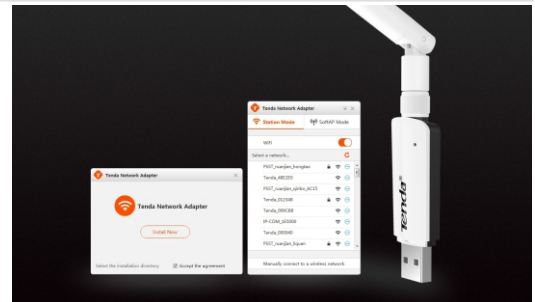


## High compatibility

U1 is built to compatible with Windows10/8.1/8/7/XP/Vista, MAC OS 10.6~10.11, and Linux operating systems. Most of the computers (desktop computers or laptops) comply with the USB adapter and can connect to the Internet through it easily.

## One step for setup One step for switching

One step for setup, besides it is easy switching wireless apapter to Hotspot (More Easier: windows 10 is free of driver installation)



## Product Specification

HARDWARE FEATURES	
Interface	USB2.0
Button	Wi-Fi Protected Setup (WPS) Button
Dimensions (W X D X H)	58mm×19.7mm×10.9mm (L x W x H)
Antenna Type	1* 3.5dBi external detachable antenna
WIRELESS FEATURES	
Wireless Standards	IEEE 802.11b, IEEE 802.11g, IEEE 802.11n
Frequency	2.400~2.4835GHz
Signal Rate	11b: Up to 11Mbps(dynamic) 11g: Up to 54Mbps(dynamic) 11n: Up to 300Mbps(dynamic)
Transmit Power	<20dBm (EIRP)
Wireless Modes	Station Mode, SoftAP Mode
Wireless Security	64/128-bit WEP,WPA-PSK / WPA2-PSK,WPA / WPA2
OTHERS	
Certification	CE, FCC, RoHS,EAC
Package Contents	Wireless Adapter U1,Resource CD
System Requirements	windows10,Windows 8.1(32/64bits), Windows 8(32/64bits),Windows 7(32/64bits), Windows Vista(32/64bits),Windows XP(32/64bits), Mac OS X 10.7~10.11, Linux
Environment	Operating Temperature: 0°C~40°C (32°F~104°F)
	Storage Temperature: -40°C~70°C (-40°F~158°F)
	Operating Humidity: 10%~90% non-condensing
	Storage Humidity: 5%~90% non-condensing
Related Products	F3、FH456、A301
IPv6	IPv6 Features Supported

Shenzhen Tenda Technology co.,Ltd  
 6-8Floor,Tower E3,No.1001,Zhongshanyuan Road,  
 Nanshan District,Shenzhen,China,518052  
 Phone:(86 755)2765 7180  
 Fax: (86 755)2765 7178  
 Email:sales@tenda.com.cn  
 support@tenda.com.cn  
 Website:http://www.tendacn.com



Specifications are subject to change without notice. Copyright ©2014 SHENZHEN TENDA TECHNOLOGY CO.,LTD. All rights reserved. Tenda is the trademark of SHENZHEN TENDA TECHNOLOGY CO.,LTD. All other brand names mentioned herein are the trademark or registered trademarks of their respective holders.